

MATH 097  
WINTER, 2008 - FORM A

①  $\sqrt{5}, 2.3, |-3| = 3$

②  $\frac{6}{25}$

③ 0.00035

④  $2.4 \times 10^{13}$

⑤  $11a + 59$

⑥  $3y^3 - 7y^2 + 4y$

⑦ c

⑧  $\frac{-4z^3}{m^2}$

⑨ 1

⑩  $y = 5$

⑪  $2ab(3ab^2 - 1)$

⑫  $(x+8)(x-5)$

⑬  $(x-4)(x+4)$

⑭ 40%

⑮  $x = 8$

⑯  $h = 6$

⑰  $(\underline{8}, 1) (\underline{-4}, \underline{-5})$

⑱  $y = -3x + 8$   
OR  $y = 8 - 3x$

⑲ x-INT (15, 0)  
y-INT (0, 6)

⑳ a) 37.50

b) 38

c) 0.25

d) charge per mile

㉑ B

㉒ -3

㉓ a)  $f = 6w$

b)  $P = 14w$

c)  $w = 2$

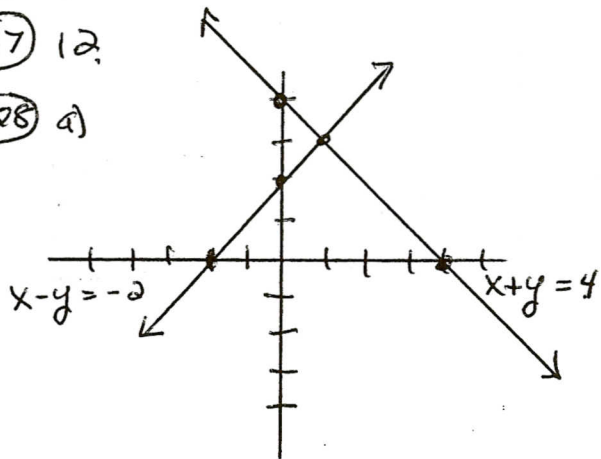
㉔  $x = 0, x = 5$

㉕  $x = -6, x = 2$

㉖  $x \leq 2$

㉗ 12

㉘ a)



b) (1, 3)

EXTRA CREDIT:

① 949

② 32449