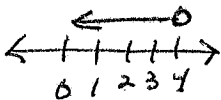
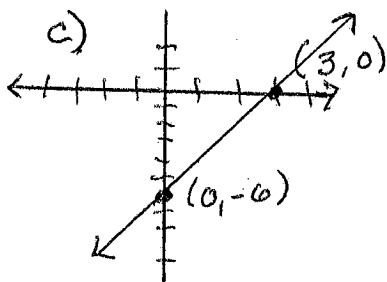


MATH 098
FINAL - FORM A
SPRING 2008

- ① $8x^2 + 7x + 1$
 ② $6x^2 - 13xy - 5y^2$
 ③ $\frac{a^3}{8b^2}$
 ④ $\frac{m}{9}$
 ⑤ $\frac{15y + 2x}{25xy}$
 ⑥ $4m - 5\sqrt{m}$
 ⑦ $\frac{15}{z^4}$
 ⑧ $7x^2y^3\sqrt{x}$
 ⑨ $2z(z+3)(z+2)$
 ⑩ $(7a-2)(7a+2)$
 ⑪ $x = -1$
 ⑫ $y = 3$
 ⑬ $a = 9$
 ⑭ $t < 4$



- ⑮ a) $(3, 0)$
 b) $(0, -6)$



- c)
 d) $y = 2x - 6$
 e) 2
 f) $-\frac{1}{2}$

- ⑯ a) $\frac{5}{2}$
 b) THE AVERAGE RATE OF CHANGE IN VOLUME MEASURED IN CC/°C
 c) $V = \frac{5}{9}t + 440$
 d) THE GAS HAS CONTRACTED UNTIL NONE REMAIN

- ⑰ a) $\frac{1}{6}$
 b) $N = \frac{1}{6}t$
 c) 78°C

- ⑱ $(2, -1)$

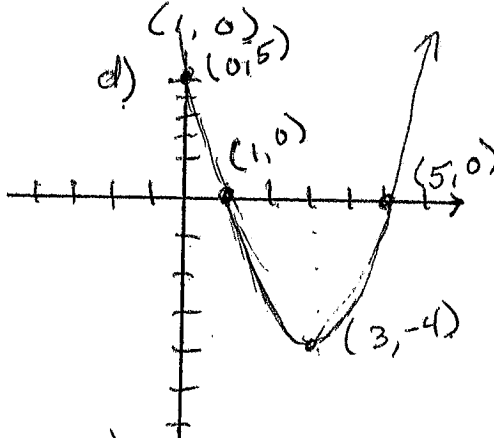
- ⑲ a) $A + C = 500$
 b) $7.50A + 4.00C = 3312.50$
 c) ADULT: 375
 CHILDREN: 125

- ⑳ $\frac{1}{2}, 2$

- ㉑ $x = -1.55, x = 0.22$

- ㉒ $m = 2$

- ㉓ a) $(3, -4)$
 b) $(0, 5)$
 c) $(5, 0)$



- ㉔ a) $L^2 = x^2 + 5184$
 b) 169.8 ft.

⑳ BONUS!

- a) 1, 2, 3, 11, 13, 14
 b) 5 THROUGH 9
 c) 20°F (APPROX)
 d) 86°F (APPROX)