

MATH 099
WINTER, 2008
FORM A

① $3\sqrt{3x}$

② $\frac{g^4}{p^3}$

③ $\sqrt{x^4}$

④ $3t-1$

⑤ $\frac{5x-1}{(x-1)(x+3)}$

⑥ $\frac{x+3}{2x}$

⑦ $m=3$

⑧ $y = 7^r$

⑨ $x = \frac{3}{5}$

⑩ $x = \frac{5}{4}$

⑪ $y = \frac{1}{2}$

⑫ $x=4$

⑬ 247 SECS.

⑭ $2+\sqrt{6}, 2-\sqrt{6}$

⑮ $h=3.17$ cm

⑯ $y = 0, -3, 1$

⑰ $(\frac{1}{3}, -\frac{2}{3})$

- ⑱ a) 3
b) $[-5, 5)$ OR $-5 \leq x < 5$
c) $[-3, 5]$ OR $-3 \leq y \leq 5$
d) $x=1, -1$

- ⑲ a) $(0, -39)$
b) $(-3, 0)$ $(13, 0)$
c) $(5, -64)$
d) $(10, -39)$

- ⑳ a) $m = \frac{2}{7}$
b) $y = \frac{2}{7}x - \frac{6}{7}$

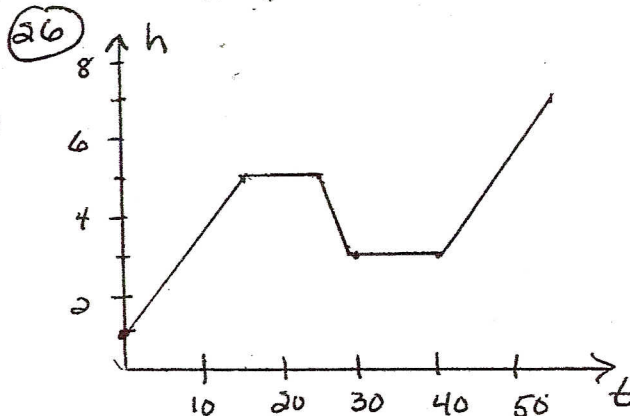
㉑ 5.06 gallons

- ㉒ a) $A = 2xy$
b) $4x + 3y = 70$
c) $x = 8.8$ meters
 $y = 11.7$ meters
d) $x = 17.5$ meters

- ㉓ a) 481.1 meters
b) 160.4 SECS.

- ㉔ a) 0.001 meters
b) 2.0 meters
c) 20 FOLDS

㉕ 8 HOURS



- ㉗ a) 10:00 AM OR
ANY TIME FROM (9:30-10:30)
b) ABOUT 2 HOURS
OR 1.5 TO 2.5 HRS OK
c) 4.5 HOURS
OR 4 TO 5 HRS OK